



BEST QUALITY FOR BETTER YIELDS...



BEST QUALITY FOR BETTER YIELDS...

## MAIZE



### AZAD-009(DLMH-009)

- Plants Height is 170-185cm
- Semi erect type plant
- Orange yellow grain colour
- Semi dent type grain texture
- Tolerant to turicum leaf bright and downy mildew
- crop duration is 110-115 days



### MEENA-45 (DLMH-45)

- Plants Height is 200-215cm
- Erect type plant
- Orange yellow grain colour
- Semi dent type grain texture with high shelling percent
- Tolerant to turicum leaf bright and downy mildew
- Crop duration is 125-130 days



### RAJA (DLMH-135)

- Plants Height is 180-195cm
- Erect type plant
- Orange yellow grain colour
- Semi dent type grain texture
- Tolerant to turicum leaf bright and downy mildew
- crop duration is 110-115 days



### DLMH-36

- Plants Height is 200-215cm
- Erect type plant
- Orange yellow grain color, high test weight
- Semi dent type grain texture with high shelling percent
- Tolerant to wilt and downy mildew
- Crop duration is 120-130 days



### DHARANI-4455

- Plants Height is 195-210cm
- Erect type plant
- Orange yellow grain colour
- Semi dent type grain texture with high shelling percent
- Tolerant to Downy mildew
- Crop duration is 115-120 days



### DLMH-27

- Plants Height is 200-215cm
- Erect type plant
- Orange yellow grain colour
- Semi dent type grain texture with high shelling percent
- Tolerant to turicum leaf bright and downy mildew
- Crop duration is 125-130 days



# HYBRID VARIETIES

## JOWAR



### VASISTA-405

- Duration 115-120cm
- Plants Height is 150-225cm
- Ear head is long, well exerted, uniform & semi compact. Grain is bold circular in shape and shiny lustrous white in colour.
- Highly tolerant to sucking pest and foliar diseases.
- Easy threshability and wide adaptability.
- Special Features are medium induration and excellent yield potential.
- folder is succulent with juicy stalk.
- Excellent roti bread making quality.

## BAJRA



### DLBH-3366

- Duration 78-80 days
- Plant height 190-200 cm
- Ear head is long & very compact.
- Grain is bold globular and shiny grey in color
- Highly tolerant to Downey mildew and Rust diseases.
- Special Features are non-lodging, high grain and fodder yield.
- Fodder is succulent and very green up until harvesting.



### DLS-99

- Duration 100-115 days
- Plant height 120-150cm
- Ear head is long, well exerted, uniform & semi compact. Grain is bold elliptic in shape and shiny lustrous grey white in color.
- Highly tolerant to sucking pest and foliar diseases and drought conditions.
- Easy threshability and wide adaptability
- Special Features are medium in duration and excellent yield potential.
- Fodder is succulent with juicy stalk.
- Excellent roti bread making quality.



### DLBH-2525

- Duration 82-85 days
- Plant height 200-215 cm
- Ear head is long & very compact.
- Grain is bold globular and shiny grey in color
- Highly tolerant to Downey mildew and Rust diseases.
- Special Features are non-lodging and heat tolerant
- High grain and fodder yield with succulent and green fodder until harvesting



# HYBRID VARIETIES

## SUNFLOWER



### ROYAL-505

- Duration 95-100 days
- Plant height 140-160cm with medium to big head size, compact with good center filling, convex shape with drooping habit.
- Black grain with light white stripes.
- Oil content-39-40%.
- High adaptability with tolerance to alternaria and rust diseases.

## REDGRAM



### JAI GANESH

- Spreading type of growth habit
- Plant height is 210-220cm with heavy branching
- Red color bold seeds
- Crop duration is 140-145 days
- Good quality dal



### DHOOM-405

- Duration 100-105 days
- Plant height 160-180cm with large, compact, convex drooping head with good Centre filling.
- Black grain with grey stripes.
- Oil content 41-43%.
- Moderately tolerant to necrosis and alternaria.
- Highly suitable for irrigated cultivation.



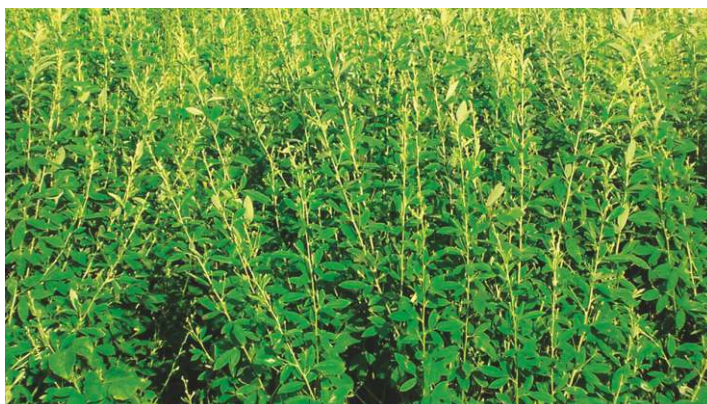
### INDRA (DLT-936)

- Spreading type of growth habit
- Plant height is 180-190cm
- Red color bold seeds
- Crop duration is 130-140 days
- Good quality dal



### SUPREME-99

- Duration 110-115 days
- Plant height 140-150cm with medium to big size, compact, flat drooping head with good Centre filling.
- Deep black grain with light grey stripes.
- Oil content 40-42%.
- Moderately tolerant to necrosis and alternaria.
- Highly suitable for rainfed cultivation.



## PADDY



### BHANU-216

- Plant height 100-110 cm.
- Duration 120-125 days
- Long slender grains with straw color husk.
- Tolerant to blast and BPH.



### DHANASRI

- Plant height 110-115cm.
- Duration 135 days.
- Medium slender grains with straw color husk. Tolerant to BPH and blast.
- Wide adaptability.
- Highly branched spikelets with lengthy spike



### GAGAN-27

- Plant height 85-90cm.
- Duration 115-125 days.
- Medium slender grains with straw color husk.
- Tolerant to blast and BPH.
- Non-lodging and produces 23-26 productive tillers with 22-25 cm long panicle.
- High yielder and milling recovery.



### SINDHU (DLP-122)

- Plant height 115-120cm.
- Duration 130 days.
- Short bold grains with straw color husk. Tolerant to BPH and blast.
- Wide adaptability.
- Highly branched spikelets with lengthy spike



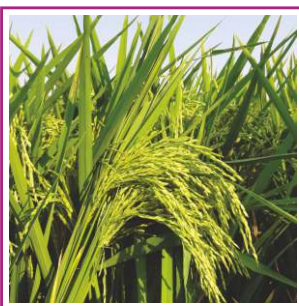
### LAHARI-1010 (DPV-1010)

- It is semi-dwarf with plant height 108-110cm.
- Duration 110-120 days.
- Long slender grains with straw color husk.
- Tolerant to BPH and resistant to blast.



### DHANYA (DLP-99)

- Plant height 115-120cm.
- Duration 130 days.
- Short bold grains with straw color husk. Tolerant to BPH and blast.
- Wide adaptability.
- Highly branched spikelets with lengthy spike



### SIRI-1179 (DPV-1179)

- It is semi-dwarf with plant height 105-110cm.
- Duration 140-145 days.
- Short slender grains with straw color husk.
- Tolerant to BPH and blast.



### RUCHI(DLP-18)

- Plant height 115-120cm.
- Duration 120-135 days.
- Short bold grains with straw color husk.
- Tolerant to BPH and blast.
- Wide adaptability.



### SUNNY (DLP-279)

- Plant height 115-125cm.
- Duration 130-135 days.
- Medium bold grains with straw color husk.
- Tolerant to BPH and blast.
- Wide adaptability.



### RAKSHAK(DLP-369)

- Plant height 110-115cm.
- Duration 130-140 days.
- Medium slender grains with straw color husk.
- Tolerant to BPH and blast.
- Wide adaptability.

# RESEARCH VARIETIES



## AMAR(DLP-27)

- It is semi-dwarf with plant height 115-120cm.
- Duration 125-135 days.
- Short slender grains with straw color husk.
- Tolerant to BPH and blast.



# NOTIFIED VARIETIES

## BENGALGRAM



### JAKI-9218

- Duration 90-120 days.
- It is Semi-Spreading with plant height 36-40 cm.
- Very bold with light brown colored grain.
- Resistance to Fusarium Wilt & Root Rot stunt

## SOYABEAN



### KDS-726

- Duration 100-105 days.
- Plant height 43-47 cm.
- Resistant to rust diseases.
- Tolerant to major pests.
- Plant growth semi erect to horizontal.
- Large grain size.



### JG-11

- Duration 90-100 days.
- It is Semi-Spreading with profuse branching.
- Plant height 40-45 cm.
- Very bold with light brown colored grain.
- Resistance to Fusarium Wilt & Root Rot stunt



### JS-335

- Duration 95-100 days.
- Plant height 43-47 cm.
- Purple flowers, Semi- determinate.
- Resistant to shattering, black hilum.
- Wide adaptability, semi dwarf habit



## CHILLY



### DILEEP-117

- A very highly pungent attractive dual purpose hybrid.
- Strong erect plant with continuous heavy bearing habit.
- Attractive, firm, Shining dark green fruits with good weight.
- High resistance to CVMV (chilli veinal mottle virus.)
- Length and width:12-14X0.8-1.0 cm.



### DLCH-243

- Plant habit : Semi Erect
- Days to 1st picking : 60-65 days
- Fruit Length : 12-13cm
- Fruit Surface : Smooth
- Fruit Color-unripe : Light Green
- Fruit Color-ripe : Dark Red
- Pungency : Medium
- Remarks : High yielding, and suitable for fresh green with good keeping quality.



### DHANALAKSHMI DELUXE

- Strong erect plant with heavy continuous bearing habit
- Medium green narrow long firm fruits with good color retention and test weight.
- Good shipping / keeping quality for both fresh and dry fruits.
- Because of high color retention hybrid is highly suitable for dry chilli powder industries
- Fruits are semi -wrinkled surface and high pungency.
- Length and width: 15-17 x 0.9-1.1cm.
- High resistance to powdery mildew and CMV.s



### DEEPHI-234

- Plant habit : Semi Erect
- Days to 1st picking : 70-75 days
- Fruit Length : 7-8cm
- Fruit Surface : Smooth
- Fruit color-unripe : Light Green
- Fruit Color-ripe : Dark Red
- Pungency : High
- Remark : High yielding, good color retention and suitable for export.



### SINDHU-45

- Plants are straight and vigorous, 85-100cm in height with strong lateral branches.
- Green fruit harvesting starts at 70-75days after transplanting. Fruits are medium long, thick walled and uniform.
- Fruit bearing is solitary, 10-11cm long and 2.2-2.4cm in diameter.
- Unripe fruits are dark green, smooth surface later turns into dark red at maturity. Medium pungency, excellent for green and dry chilli purpose.



### SONAL-555

- Plant height 90-100 cm, strong bushy type habit.
- Fruit harvesting starts from 50-55days after transplanting.
- Unripe green chilli dark green, semi wrinkled fruit surface turns into dark red at maturity.
- Fruit are pungent, Badgi type high yielding suitable for dry chilli purpose.
- Fruit Length 7-8 cm





## LAXMI-225

- Strong and erect growing plant. Traditional type lengthy fruits. Fruit harvesting starts at 50-55days after transplanting.
- Attractive, parrot green lustrous fruits. Very good keeping and shipping quality
- Suitable for all Agro climatic zones of India and having high consumer market preference.
- Fruits are medium pungent and slightly wrinkled fruit surface Length and width: 7-8cm x1.0-1.4cm.Excellent for green & Red chilli purpose



## ARCHANA

- Strong and erect growing plant.
- Fruit harvesting starts at 55-60days after transplanting.
- Attractive, parrot green lustrous fruits.
- Very good keeping and shipping quality.
- Suitable for all Agro climatic zones of India. Have high consumer market preference.
- Fruits are medium pungent and slightly wrinkled fruit surface.
- Fruit Length 10-12cm
- Excellent for Green & Red chilli purpose.



## DLC-335

- Plants are umbrella shape, straight and vigorous, 85-100cm in height with strong lateral branches.
- Fruit harvesting starts at 70-75days after transplanting.
- Fruit is long, thin walled and uniform.
- Fruit bearing is solitary, 10-11cm long and 1.2-1.3cm in diameter.
- Unripe fruits are dark green, smooth surface later turns into dark red at maturity.
- Medium pungency, excellent for green and dry chilli purpose.



## BHENDI



### KOMAL-72

- Tall plant with very vigorous 2-3 branches with short internode.
- 10-12 cm long fruit with dark green color with 5-6 ridges
- Days to first picking is 45-50 days
- 110-120 days duration.
- Highly tolerant to YVMV



### ARUNA-304

- Medium tall plant with very vigorous 3-4 branches with short internode.
- 12-15 cm long fruit with medium green color with 5-6 ridges
- Days to first picking is 40-45 days
- 100-105 days duration.
- Highly tolerant to YVMV



### DLTH-2124

- Plant is Semi-determinate with very vigorous growth and heavy fruit bearing.
- Fruit harvesting starts from 68-72 days after transplanting
- Fruits are flat round with very good firmness.100-120g in weight.
- Uniform size fruit with deep red color at maturity.
- High yield potential with high tolerance to heat, wilt and TLCV.

## TOMATO



### APOORVA

- Plant is large determinate, medium foliage cover with profuse branching.
- Fruits are Firm and uniform in size with excellent shelf life, flat round medium to big size with 90-100g In weight.
- Fruit harvesting starts from 60-62 days after transplanting.
- Ripe fruit are red and glossy with very good sour taste.
- Wide adaptability. Highly tolerant to heat and TLCV.
- Good for long distance transportation.



### VAJRA (DLTH-2277)

- Plant is determinate with very vigorous growth and heavy fruit bearing.
- Fruit harvesting starts from 65-70 days after transplanting.
- Fruits are flat round with very good firmness.90-100g in weight.
- Uniform size fruit with deep red color at maturity.
- High yield potential with high tolerance to heat, wilt and TLCV.



## BRINGAL



### SARADA

- Plant is bushy, semi dwarf, medium height with lateral branching.
- Vigorous, green foliage without thorns.
- Cluster bearing habit, oval and round shaped medium to small size fruits.
- Fruit harvesting starts from 45-50 days after transplanting.
- Average weight of fruit is 60-80 g.

## BITTER GOURD



### SONY-45

- Healthy and vigorous vine with high longevity.
- Very early maturity.
- Attractive, shining and dark green fruits.
- Highly suitable for long distance shipping with good keeping quality.
- Average fruit length 14-17cm.
- Heavy yield with prolific bearing with first picking in 72-78 days



### PASAND

- Strong, vigorous and erect growing plant habit.
- Attractive, glossy, thick, pinkish purple oblong fruits.
- Thorn less, cluster bearing fruit habit.
- Fruits are straight, 16-18cm long with average weight of 50-60g.
- Intermediate resistant to bacterial wilt.



### NITHYA-9

- Very strong and vigorous vine with more branching.
- Dark green fruit with prominent and profuse spines.
- Medium long fruit 15-20cm length & 125-150g in weight.
- First fruit harvesting starts at 75-80 days after sowing.
- Medium tolerant to powdery mildew and downy mildew.

## BOTTLE GOURD



### NIKHIL-207

- Very highly vigorous vine with 50-55 days to 50% flowering
- Fruits length 40-45cm, cylindrical in shape
- Attractive uniform light green color skin with milky white soft flesh
- First fruit picking starts at 60-65 days after sowing.
- Keeping and cooking quality is very good
- 140-150 days duration.

## RIDGE GOURD



### CHITRA-45

- Early maturing vigorous hybrid.
- First fruit harvesting starts at 45-50 days after sowing.
- Fruits are long and straight, 40-45cm, bright green with well-marked strong ridges.
- Inside flesh pure white with tender seeds.
- Hybrid is suitable for round the year cultivation
- Duration 135-150 days



### RANA (DL-21)

- Very highly vigorous vine
- Fruits length 35-40 cm, club shape fruit
- Attractive uniform light green color skin with milky white soft flesh
- First fruit picking starts at 70-80 days after sowing.
- Keeping and cooking quality is very good
- 150-160 days duration.



### SWATHI-27

- Duration 140-160 days
- Medium maturing vigorous hybrid.
- First fruit harvesting starts at 50-55days after sowing.
- Fruits are long and straight, 40-45cm, bright green with well-marked strong ridges.
- Inside flesh pure white with tender seeds.
- Hybrid is suitable for round the year cultivation

## DOLICHOS



### NAVYA

- Bushy plant, flowers and fruits by 45-50days.
- Prolific bearer for a period of 130-150 days with two harvests.
- Fruits have a typical acidic flavour in all season.
- Free from bitterness and phenols and are excellent in cooking quality and flavour.
- Each spike bears 9-12 fruits with each fruit having 3-4 beans

## CUCUMBER



### DHANA-153

- Matures in 40-45 days
- Very good vigor
- Fruits are slender long, green with white stripes
- Fruit length 18-20cm with good keeping quality
- High bearing hybrid

## CLUSTER BEANS



### GEETHA

- Plant height-90-100cm
- Days to 1st flower-30-34
- Internodal distance-3-4cm
- Light green pod with 9-12 cm length with 8-10 pods per cluster
- Days to first harvest are 45-48 days with 90-100 days duration.

## CORIANDER



### DLC-1112

- Vigorously growing, medium tall plant
- Ready for harvest within 35 days after sowing
- Dark green succulent leaves with excellent aroma
- Late bolting and multi-cut suitable type

## WATERMELON



### WATERMELON

- Duration-80-85 days
- Vigorously growing vine
- Attractive pale grey coloured fruit with dark red color pulp with TSS 12%
- Fruits are round to oval with fruit weight of 8-10Kg.
- High yielder with excellent keeping quality suitable for long distance transportation

## SSG



### SSG

- The plant stands 200-220cm tall.
- The stems are about 1/4 inch in diameter with excellent re-generation
- Dark green and broad elongated leaves.
- Produces 8-10 tillers.
- 120-125 days duration with 6-8 cuttings.



## WHEAT



### DLSW-54

- Semi erect Plant type with 105-110cm plant height.
- Matures in 140-145 days.
- Dark green foliage at booting stage.
- Amber color green with hard texture,
- oblong shape and bold in size.
- Yield potential 25-27 q/acre.



### DLSW-36

- Average Plant Height is 100-105cm.
- It Matures in 150-155 days and has extremely high resistance to black and yellow rust.
- Robust stem and a long compact spike with high grain number.
- High Protein content and Good Bread quality.

## MUSTARD



### VAHINI-1112

- Early maturing variety.
- Crop matures in 90-100 days.
- It's suitable for toria-Wheat cultivation.
- Seeds are dark brown and bold in size.
- It gives average yield of 6-7 q/acre.
- Oil content of 41-43%



## COTTON



### RAGHAVA-459 BG-II

- Crop duration 150-155 days.
- Big boll with boll size 5.5-5.8gm.
- Round boll with prominent tip and excellent boll bursting with easy picking.
- Highly tolerant to sucking pest.
- Very high yielding Hybrid with superior lint quality.



### DIL-9 BG-II

- Crop duration 140-150 days.
- Big boll with boll size 5.5-6.0gm
- Round boll with super boll bursting.
- Highly tolerant to sucking pest.
- High yielding Hybrid with
- excellent fibre characters.



### DILEEP-135 BG-II

- Crop duration 150-160 days.
- Big boll with boll size 4.5-5.0gm
- Round boll with prominent tip and excellent boll bursting with easy picking.
- Highly tolerant to sucking pest.
- Very high yielding Hybrid with superior lint quality.



### KESHAVA-279 BG-II

- Crop duration 155-160 days.
- Big boll with boll size 5.4-5.8gm.
- Round boll with excellent boll bursting with easy picking.
- Highly tolerant to sucking pest.
- Very high yielding Hybrid with superior Fibre quality.





## **DHANALAKSHMI SEEDS PVT. LTD.**

Flat No. A3, Satyasai Apartments, Raghavendra Nagar,  
Kurnool Dt - 518002, Andhra Pradesh, Phone : 08518-233739  
e-mail: [ghanalakshmiseedsknl@gmail.com](mailto:ghanalakshmiseedsknl@gmail.com)